

## Undergraduate Program

# Geomatics Engineering

## What is geomatics engineering?

Geomatics is a new term incorporating cutting edge technology in image processing, digital photogrammetry, remote sensing, satellite-based global positioning, geographic information systems, drone based mapping, laser scanning, surveying and digital mapping. In addition, geomatics engineering can involve work in land development, construction surveying, forensic surveying, hydrographic surveying and spatial data analysis.

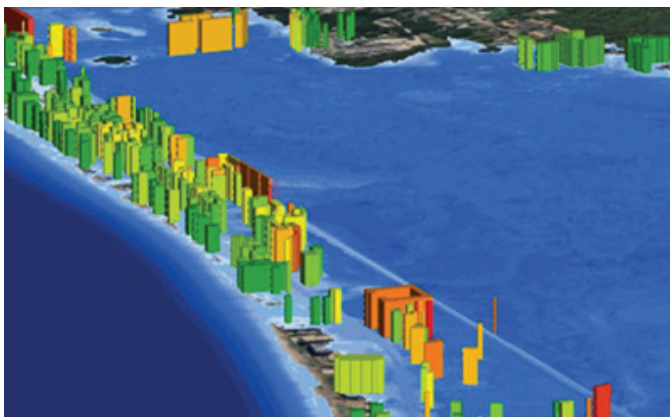
There are a wide variety of jobs available to a geomatics engineer in design, development and operation of systems for mapping information about the land, the oceans, our natural resources and manmade features.

## About the FAU geomatics engineering program

The FAU Department of Civil, Environmental and Geomatics Engineering faculty have outstanding teaching and research experience and diverse professional backgrounds. Students in this program can collaborate with other engineering and geoscience disciplines. The program provides a unique environment to prepare students for the Principles and Practice of Land Surveying (PS) and the Principles and Practice of Engineering (PE) exams that lead to professional licensing. This degree not only prepares students for the future, but it prepares them to design the future.

## Can I take geomatics courses online?

Yes, most of the geomatics engineering upper division courses have a significant online component, while labs can be taken face-to-face on the FAU Boca Raton or John D. MacArthur Jupiter campuses. A unique delivery system called GENIE (Geomatics Engineering Net Instructional Environment) is being utilized extensively for program delivery.



Flood Inundation Map - USDOT

## What geomatics engineering programs are offered at FAU?

- Bachelor of Science in Geomatics Engineering (B.S.G.E.)\*
- Minor in Geomatics Engineering
- Certificate in Geomatics Engineering
- Minor in Geographic Information Systems\*\*
- Certificate in Geographic Information Systems\*\*

\* The Bachelor of Science in Geomatics Engineering degree is accredited by the Engineering Accreditation Commission of ABET, [www.abet.org](http://www.abet.org).

\*\* In collaboration with the FAU Department of Geosciences.

## What student activities can I participate in?

- American Society of Civil Engineers (ASCE) [asce.fau.edu](http://asce.fau.edu)
- American Society of Photogrammetry & Remote Sensing (ASPRS)
- Geomatics Engineering Student Society (GESS)  
(Student Chapter of the Florida Surveying & Mapping Society)
- Institute of Transportation Engineers

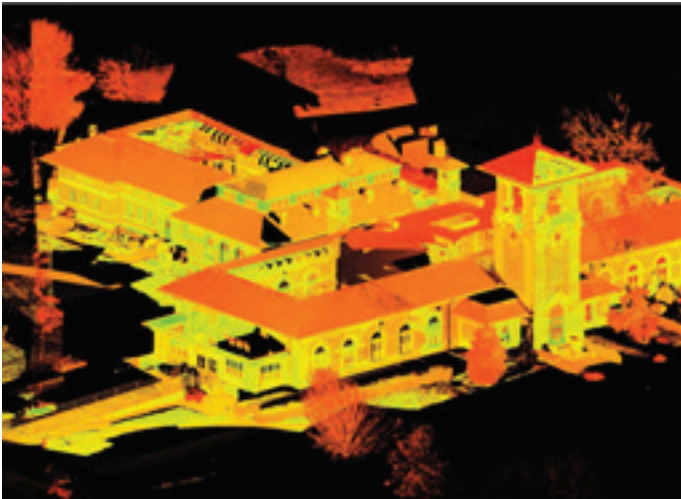
See other student clubs and organizations at [dessa.fau.edu/clubs.php](http://dessa.fau.edu/clubs.php).



Geographic Information System (GIS)



3D City Models - LA County, Google



3D Laser Scanning - NCPTT

### Where can I get academic advising, guidance and counseling?

Contact the Division of Engineering Student Services and Advising office at 561.297.2790 or [engineering-services@fau.edu](mailto:engineering-services@fau.edu). You can also visit their website at [dessa.fau.edu](http://dessa.fau.edu).

### Where can I find out about scholarships and financial aid?

The FAU Office of Undergraduate Admissions offers numerous scholarships for incoming freshman and transfer students and links to financial aid.

Phone: 561.297.3040  
[admissions@fau.edu](mailto:admissions@fau.edu)  
[fau.edu/admissions/scholarships-all.php](http://fau.edu/admissions/scholarships-all.php)

### How do I apply?

Students can apply online at the Office of Undergraduate Admissions.

Florida Atlantic University  
Office of Undergraduate Admissions  
777 Glades Road – SU 80  
P.O. Box 3091  
Boca Raton, FL 33431-0991

Phone: 561.297.3040 | Fax: 561.297.2758  
[admissions@fau.edu](mailto:admissions@fau.edu) | [fau.edu/admissions](http://fau.edu/admissions)

### For further information about our programs, please contact us at:

Florida Atlantic University  
Department of Civil, Environmental  
and Geomatics Engineering  
777 Glades Road EG 231  
Boca Raton, FL 33431-0991  
Phone: 561.297.2658  
[geomaticsend@fau.edu](mailto:geomaticsend@fau.edu) | [cege.fau.edu](http://cege.fau.edu)