

ERRATA for
PE Civil: Geotechnical Practice Exam
 ISBN: 978-1-947801-30-1
 Copyright 2023
 Errata posted 06/01/2024

Revisions are shown in red.

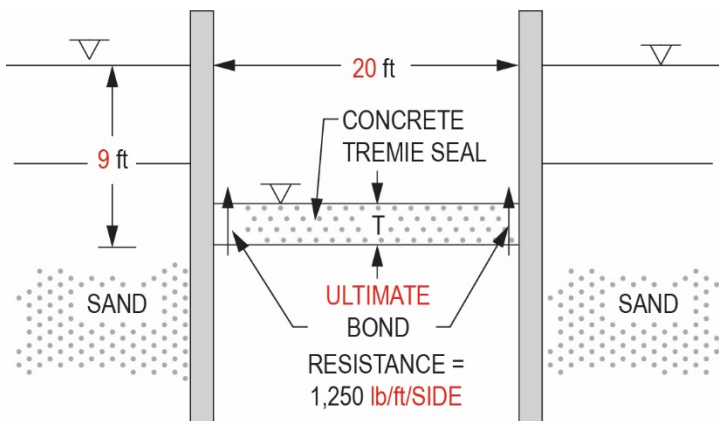
Question 4, p. 5:

C. **Soft to medium stiff** clay layers are encountered over wet sand.

Question 8, p. 8:

Engineering Parameter	In Situ Test Method
Bearing capacity	Borehole slug test
Shear wave velocity	Plate load test
Soil permeability	Pressuremeter test
Soil stratigraphy and estimate of soil type	Seismic cone penetrometer
Stress- strain modulus	Field torvane test
Undrained shear strength	SPT boring

Question 59, p. 47:



ERRATA for
PE Civil: Geotechnical Practice Exam
ISBN: 978-1-947801-30-1
Copyright 2023
Errata posted 06/01/2024

Solution 8, p. 74:

Engineering Parameter	In Situ Test Method
Bearing capacity	Plate load test
Shear wave velocity	Seismic cone penetrometer
Soil permeability	Borehole slug test
Soil stratigraphy and estimate of soil type	SPT boring
Stress-strain modulus	Pressuremeter test
Undrained shear strength	Field torvane test

Solution 58, p. 92:

Driving Force

$$F_2 = 0 \text{ (consider dead loads only)}$$

$$F_D = F_1 + F_2 = 1,120 \text{ lb} + 0 \text{ lb}$$

Resisting Forces

$$FS = \frac{F_R}{F_D} = \frac{577.4 \text{ L}}{1,120} = 2.0$$