

ERRATA for
PE Civil: Structural Practice Exam
ISBN: 978-1-947801-31-8
Copyright 2023
Errata posted 06/01/2024

Revisions are shown in red.

Question 51, p. 36:

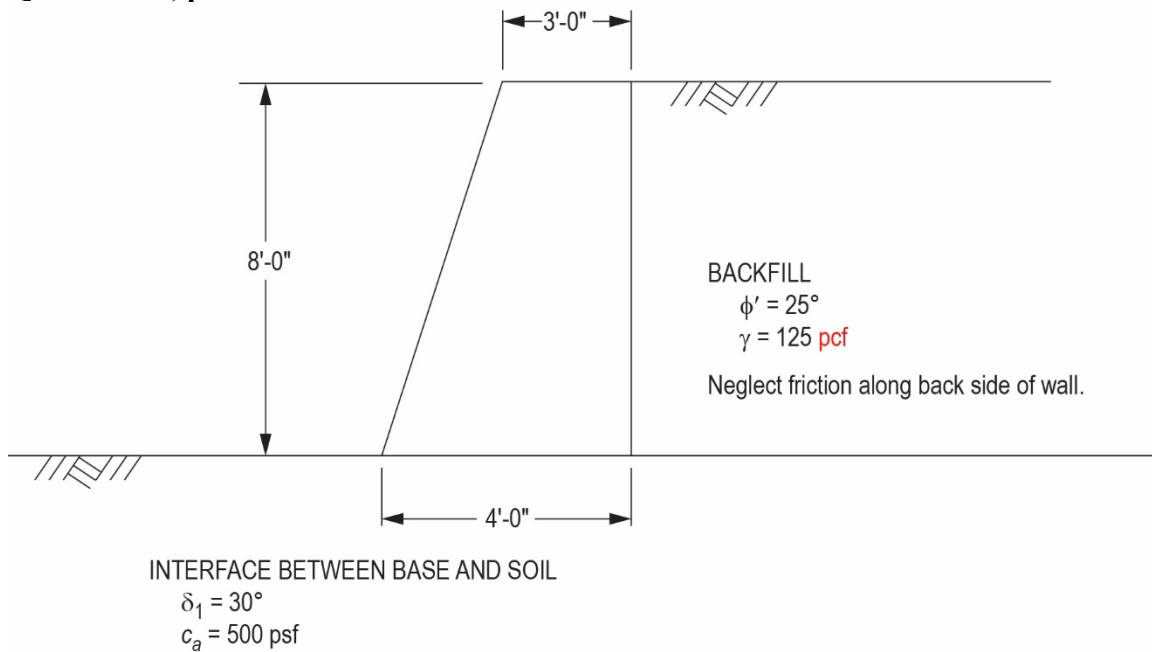
Per ASCE 7-16, the estimated design lateral soil load (psf/foot of depth) for nonrigid walls is most nearly:

Question 65, p. 48:

Option B should read as follows:

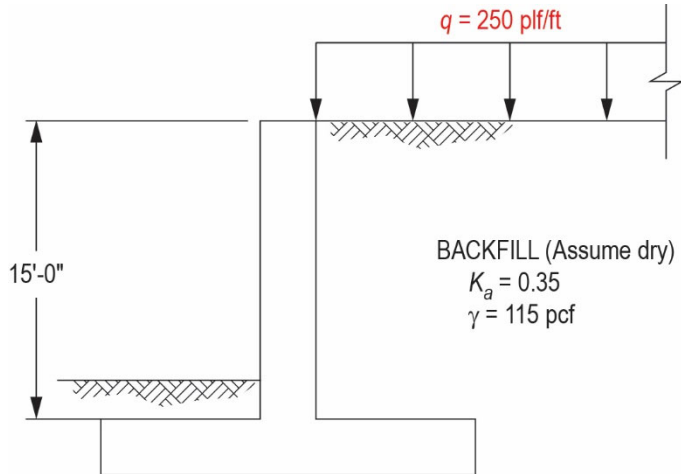
- B. ASD = 21.3
LRFD = 32.1

Question 79, p. 54:



ERRATA for
PE Civil: Structural Practice Exam
 ISBN: 978-1-947801-31-8
 Copyright 2023
 Errata posted 06/01/2024

Question 80, p. 55:



Solution 61, p. 79:

By inspection P controls. P is limited by the yielding of the horizontal leg of the angle. Use plate yielding limit state, per section F11.1.

Solution 65, p. 81:

Reference: AISC, 15th ed.

$$R_n = F_n A_b$$

Equation J3-1

$$\phi = 0.75, \Omega = 2.00$$

ASD:

$$F_{nv} = 27 \text{ ksi} \quad F_{nv} / \Omega = 13.5 \text{ ksi}$$

Table J3.2

$$\text{Allowable load} = 2(13.5)(0.79) = 21.33 \text{ kips}$$

LRFD:

$$\phi R_n = \phi F_{nv} A_b$$

$$\phi F_{nv} = 20.3 \text{ ksi (A307 bolts)}$$

$$\phi R_n = (20.3)(0.79)(2) = 32.07 \text{ kips}$$

Alternate solution, use Table 7-1

ERRATA for
PE Civil: Structural Practice Exam
ISBN: 978-1-947801-31-8
Copyright 2023
Errata posted 06/01/2024

Solution 75, p. 86:

J 3.5 max edge distance $12(t) = 12(3/4) = 9$ in., **6 in. maximum governs.**

THE CORRECT ANSWERS ARE: A, D, F