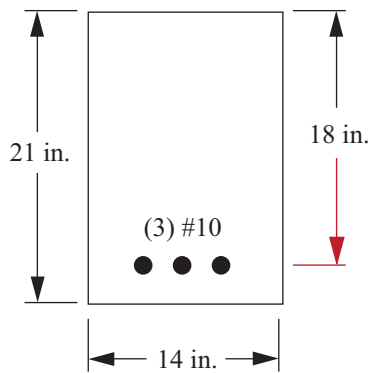


ERRATA for
FE Civil Practice Exam
ISBN: 978-1-932613-81-0
Copyright 2017
Errata posted 3/28/2018

Revisions are shown in red.

Question 67, p. 50:

The figure should appear as follows:



$$f'_c = 4,000 \text{ psi}$$

$$f_y = 60 \text{ ksi}$$

Question 89, p. 62:

Question 89 has been replaced by the following:

Typically, groundwater is likely to contain high concentrations of:

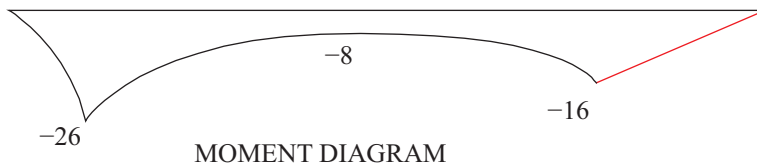
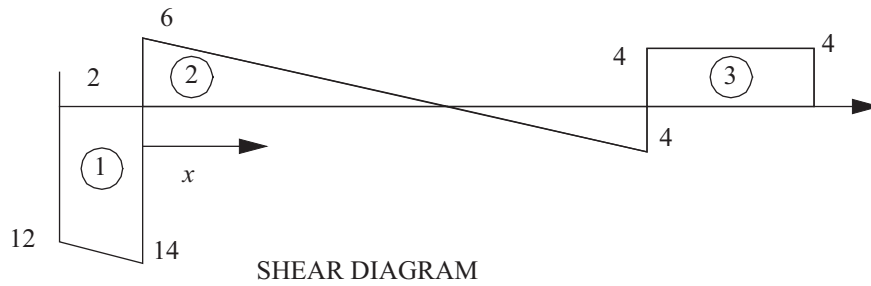
- A. particles measured as turbidity
- B. microorganisms
- C. calcium hardness
- D. algae

THE CORRECT ANSWER IS: C

ERRATA for
FE Civil Practice Exam
ISBN: 978-1-932613-81-0
Copyright 2017
Errata posted 3/28/2018

Solution 33, p. 83:

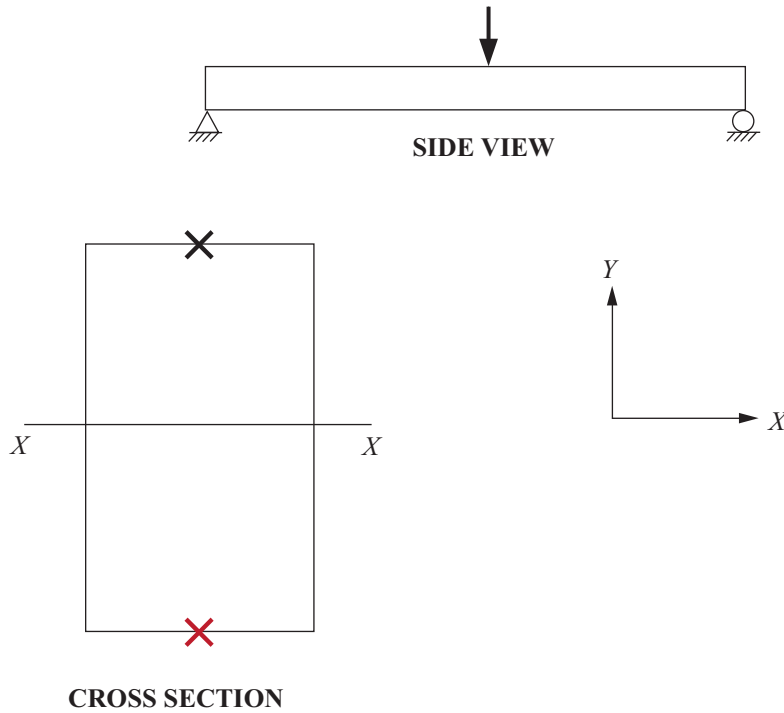
The figure should appear as follows:



ERRATA for
FE Civil Practice Exam
ISBN: 978-1-932613-81-0
Copyright 2017
Errata posted 3/28/2018

Solution 64, p. 96:

The figure should appear as follows:



Solution 89, p. 105:

The solution should read as follows:

Calcium and other ions dissolves as precipitation percolates through soil, resulting in high concentrations in groundwater.

Previously posted errata continued on next page

ERRATA for
FE Civil Practice Exam
ISBN: 978-1-932613-81-0
Copyright 2017
Errata posted 4/18/2017

Revisions are shown in red.

Question 73, p. 54:

The second sentence should read as follows:

The Rankine **passive force (lb/ft)** possible on the wall is most nearly:

Solution 73, p. 100:

The correct answer is 27,000 **lb/ft**.